

Installation, Operating and Maintenance Instructions Manual

L03K.X.VE



S.A.S. CONDUCTIX-WAMPFLER
30 avenue Brillat Savarin - BP39
01300 Belley - France

tél. +33 (0)4 79 42 50 00
fax +33 (0)4 79 42 50 05
internet : www.conductix.com

CONDUCTIX
wampfler
Ⓞ DELACHAUX GROUP

E-360N057-0317



This equipment is not designed to be used in EXplosive ATmospheres (ATEX)
in accordance with the definition in directive 2014/34/UE dated 29 March 2014



■ General information

■ Limit of liability

The user is responsible for the installation and use of the supplied equipment in compliance with the rules described below. Conductix-Wampfler can not guarantee the equipment in case of deviation from these rules without its prior agreement. All operations must be carried out by qualified personnel, in compliance with the standards and regulations in force.

■ Data and modifications

This document provides the information required for the commissioning, use and maintenance of the supplied equipment. Conductix-Wampfler reserves the right to modify the characteristics of its products at any time to provide them with the latest technological developments. The information contained in this document is therefore subject to change without prior notice.

■ Safety rules

During adjustment and maintenance work and when the equipment is in operation, the basic safety rules must be observed. In normal operation, all covers and safety systems must be in place and in working order.

■ Technical characteristics

■ Operating conditions

- The spring reel L03K.X.VE is dedicated to the charging of electric vehicles in Mode 3 : «Dedicated circuit socket»



To ensure an optimized load with limited heating, unwind at least one third of the available cable length.

■ Charging time

- 7 kW | 32 A | 230 V-AC1: four hours approx.
- 22 kW | 32 A | 400 V-AC3: one hour approx.

■ Design

- The spring reel L03K.X.VE is designed to be wall mounted or ceiling mounted. The ratchet lock system operates in these two positions
- Optionally, the spring reel can be equipped with a swivel bracket SP3

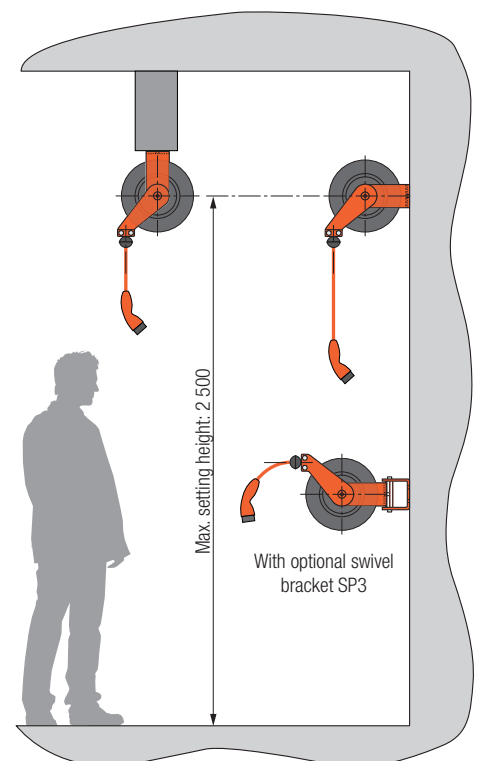
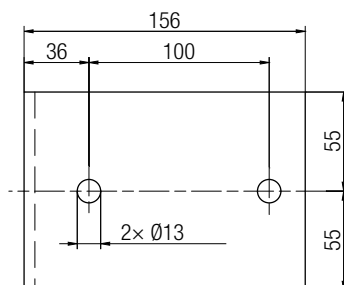
■ Installation

■ Reel attachment

- Use the holes provided for this purpose in the frame of the reel or in swivel bracket SP3 (option).
- Use suitable screws (dimensions) of class 8.8 minimum

■ Geometry

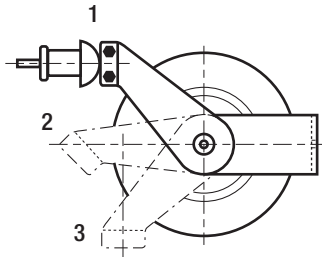
- The rotation axis of the reel drum must be horizontal
- The traction axis of the cable must be perpendicular to the axis of the reel drum



▪ Roller guide arm

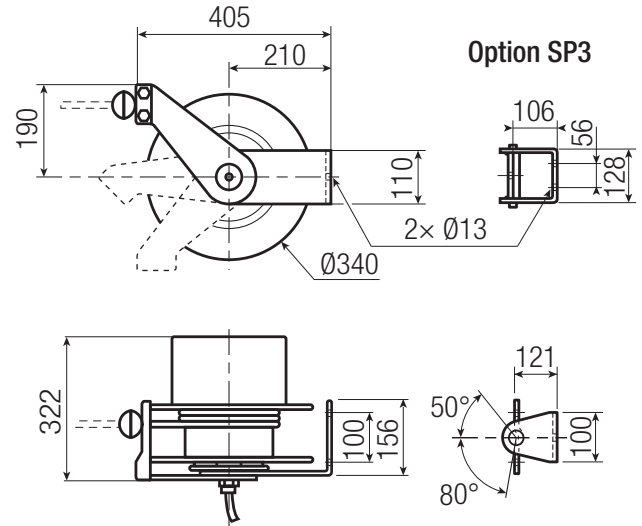


Do not change the position of the roller guide arm outside the 3 positions as shown in the diagram below.



▪ Swivel bracket SP3 (option)

- Art. No. 3087027
- Wall mounting only



■ Commissioning

▪ Before commissioning

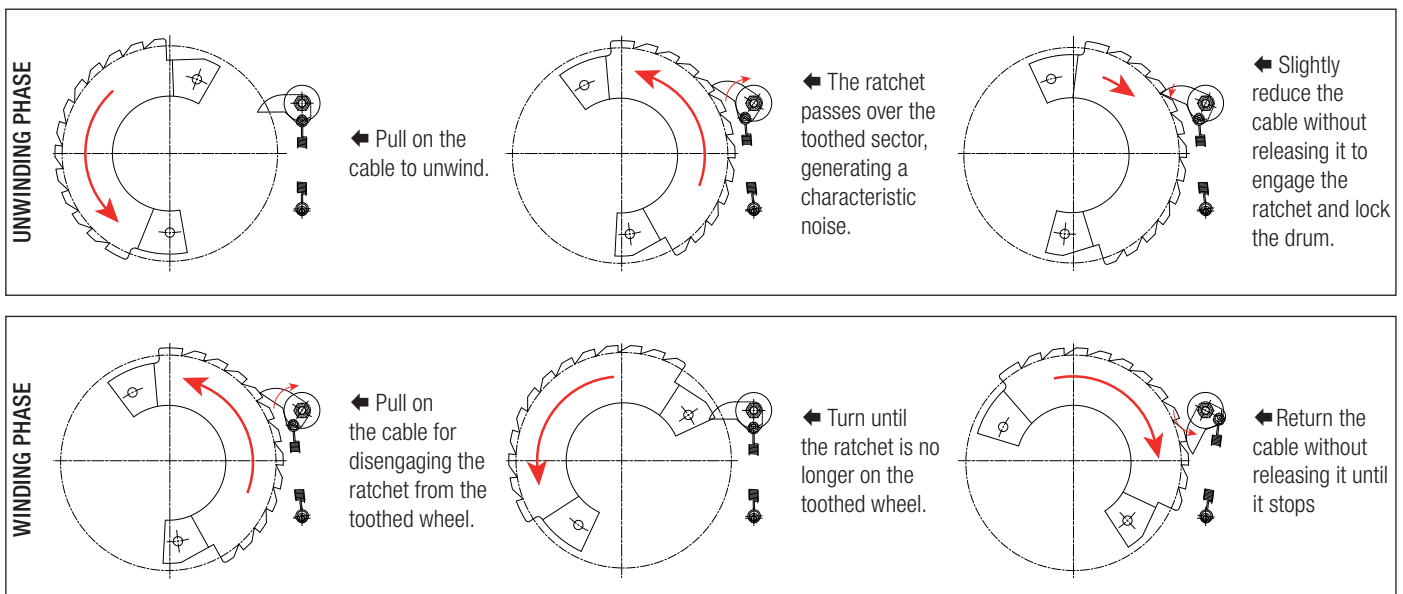
- Check if the type of the reel is compatible with the USE especially if the core section of cable corresponds to the amperage consumed.
- Check that the electrical circuit is properly protected.
- Ensure operators are trained to use the spring reel.

▪ Connection 'Plug & Play'

- Cut and remove the collar that holds the cable tail at fixed part. Connect the connection plug to the charging terminal.

■ Operation

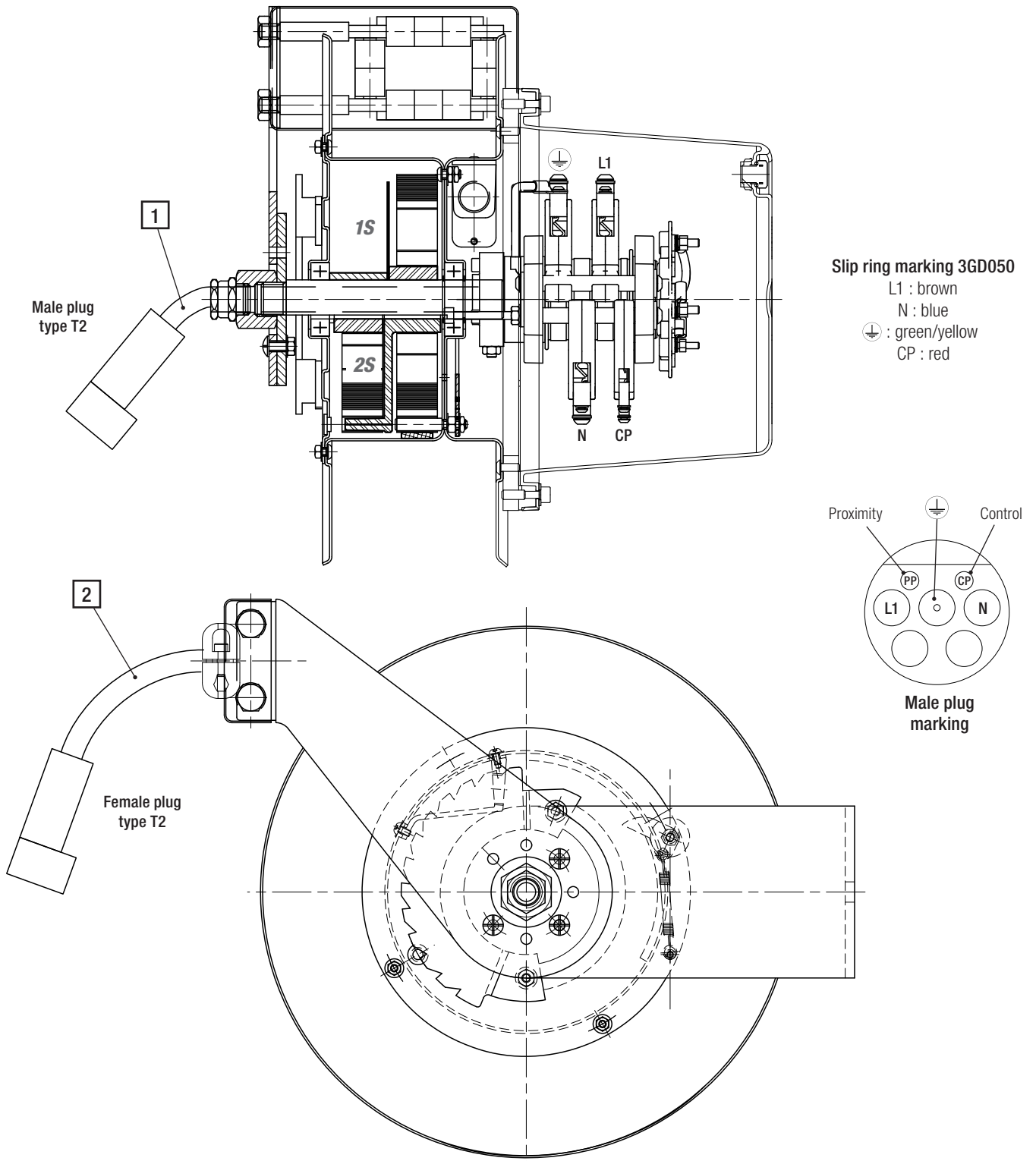
▪ Operation of the ratchet system



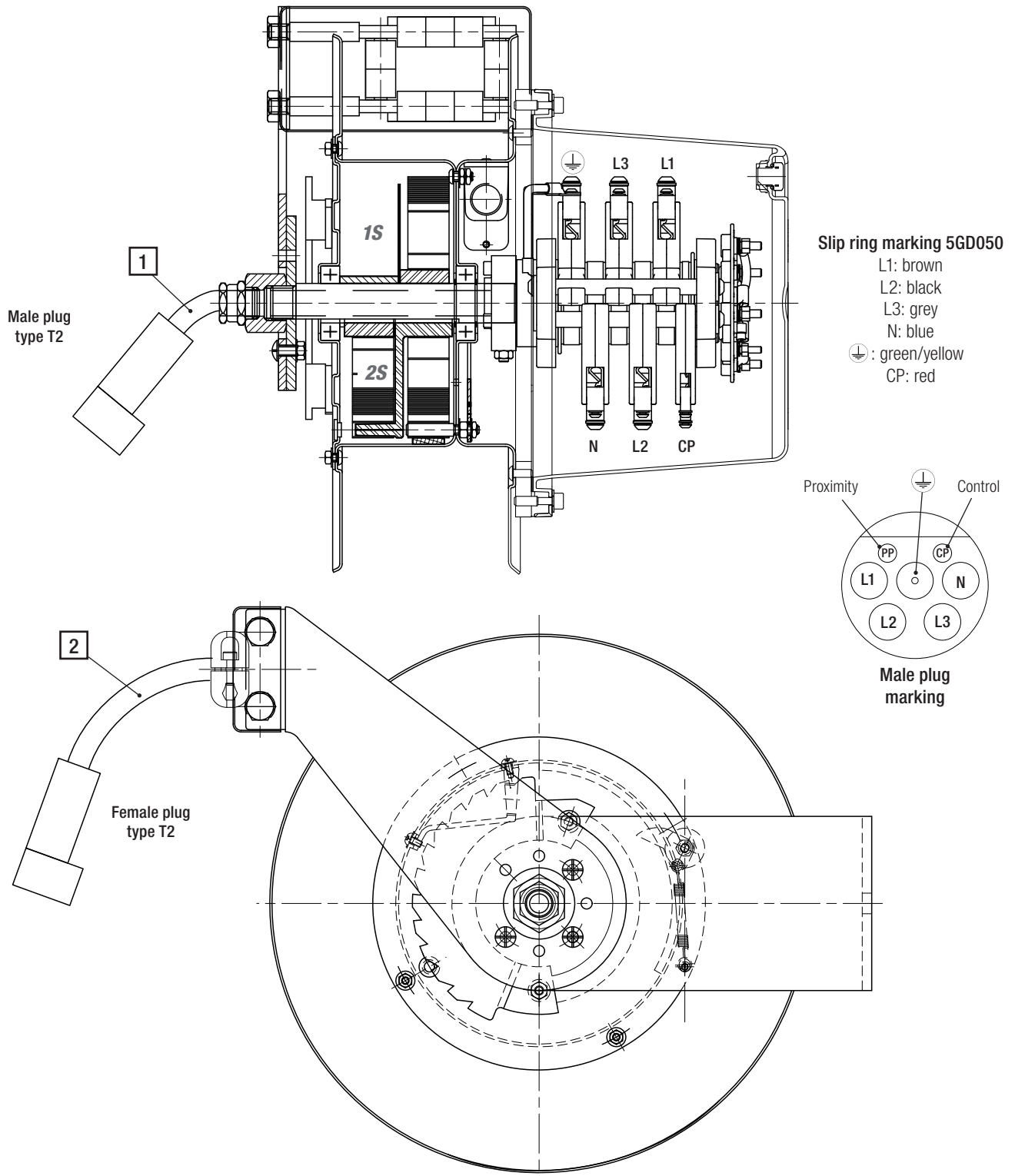
Never release the cable when the ratchet is out of the toothed sector!



Model	Art. No.	Spring motor type	Cable tail #1		Wound cable #2	
			Type	Length [m]	Type	Length [m]
L03K.X 030607.VE	3189282	1S	OLFLEX	1.5 m	OLFLEX	7 m
L03K.X 030610.VE	3188704	2S	3G6mm ² +1×0.5mm ²		3G6mm ² +1×0.5mm ²	10 m



Model	Art. No.	Spring motor type	Cable tail #1		Wound cable #2	
			Type	Length [m]	Type	Length [m]
L03K.X 050607.VE	3189157	1S	OLFLEX	1,5 m	OLFLEX	7 m
L03K.X 050610.VE	3188779	2S	5G6mm ² +1×0.5mm ²		5G6mm ² +1×0.5mm ²	10 m



■ Maintenance



Before starting any work on the equipment, switch power OFF!



■ Slip rings

Every 6 months of operation:

- Clean insulating parts. Dust off the assembly.
- Check the surface condition of the rings, the wear of the brushes, the pushing force of the springs and the position of the carbon brushes on the rings.
- If the patina is not uniform, homogeneous, shiny (streaky or with irregular stains ...), retouching with a grade 320 emery cloth.
- Check the condition of the connections and tighten the screws.
- Check the continuity of the 'pilot' circuit.

■ Cables

- Regularly inspect the condition of the wound cable and the cable tail (fixed part). If the outer insulating sheath is damaged and / or a conductor is cut, consult us. Repairs must be carried out in our workshops.

■ Spare parts

Consult us (See references on the cover page of this manual).
Specify the reference of the spring reel.